



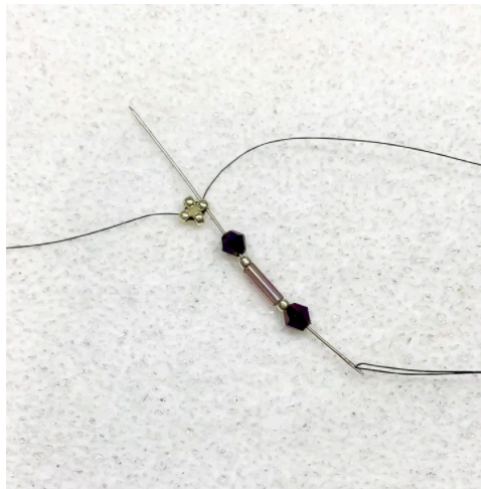
Double Diamond Earrings

MATERIALS LIST (One Pair)

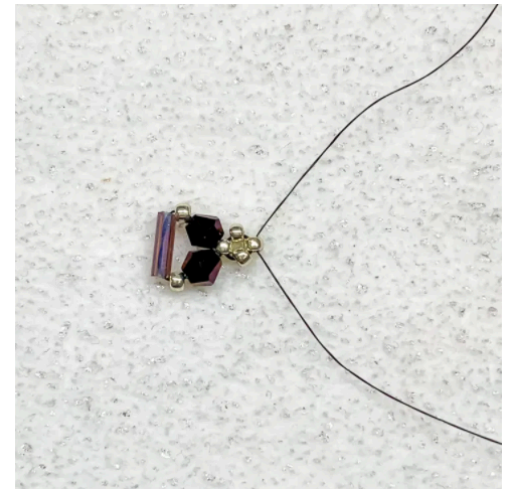
- 16 - 4mm Bicone Beads
- 16 - 6mm Bugle Beads
- 11/0 Seed Beads
- 6ft - Fireline, or beading thread of choice
- Beading Needle, Size 10
- 2 - Post Earring Findings (12x4mm)
- Scissors



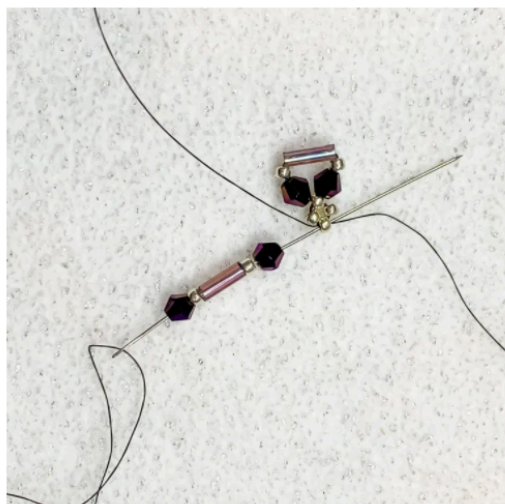
Step 01. Pick up (4) Seed Beads (SB), and slide down the thread, leaving a 4-6" tail. Sew back through the beads at least once more to form a loop, as shown.



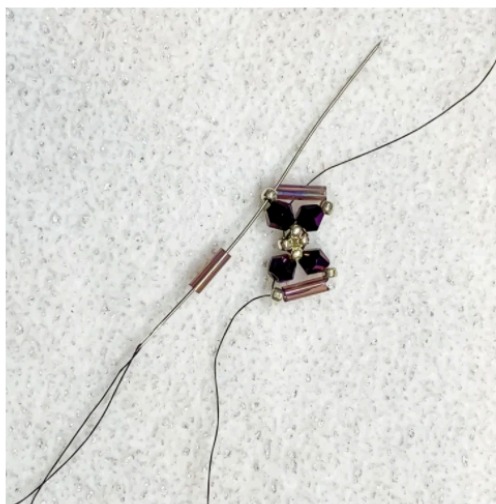
Step 02. Pick up (1) Bicone, (1) SB, (1) Bugle, (1) SB, (1) Bicone. Sew through the opposite hole of the SB that you exited from.



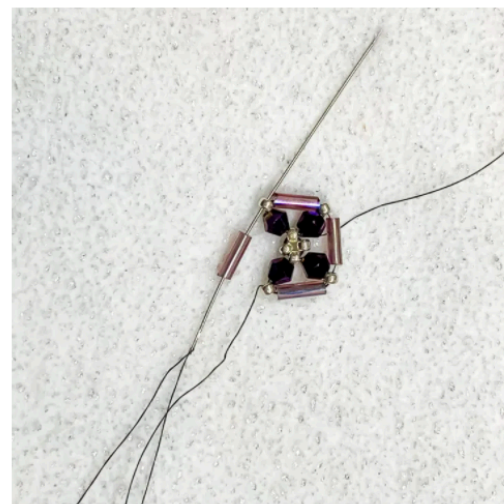
Step 03. Gently, pull the thread taught to bring the beads together. One at a time, sew through the next two SB, and exit out of the seed bead on the opposite side.



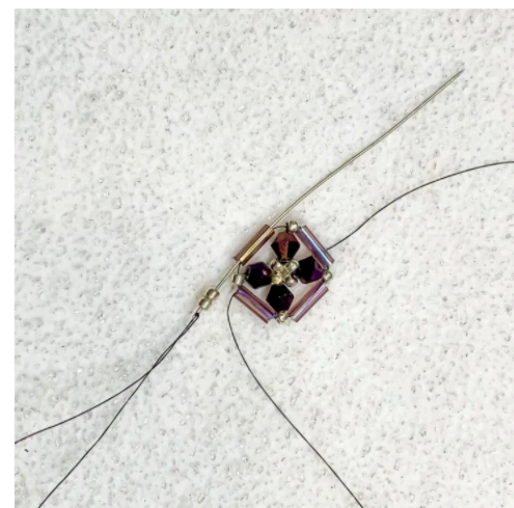
Step 04. Pick up (1) Bicone, (1) SB, (1) Bugle, (1) SB, (1) Bicone. Sew through the opposite hole of the SB that was exited.



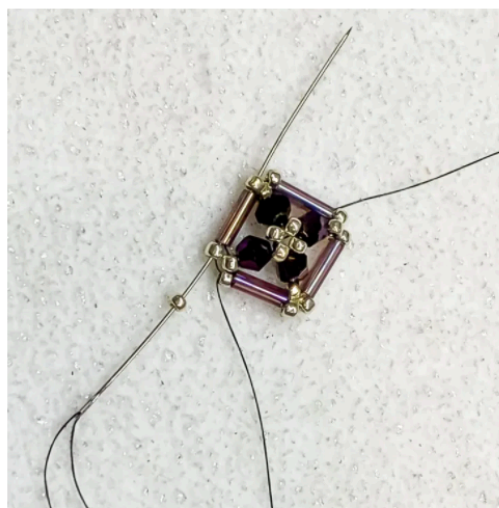
Step 05. Sew back down through the Bicone, SB, Bugle, and SB. Pick up (1) Bugle, and sew through the SB on the opposite side, as shown.



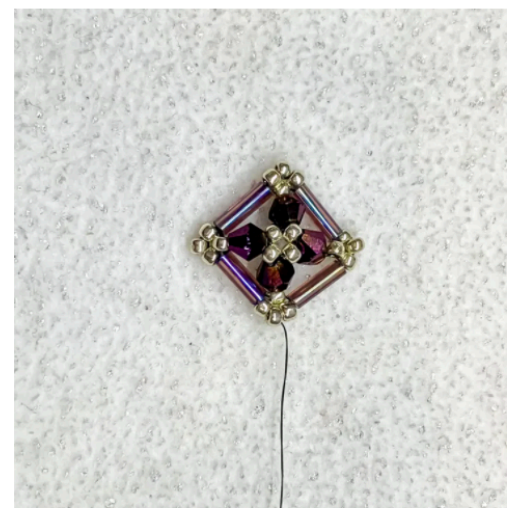
Step 06. Sew through the next Bugle and SB. Pick up another Bugle, and sew through the SB on the opposite side, as shown. Sew through the next Bugle.



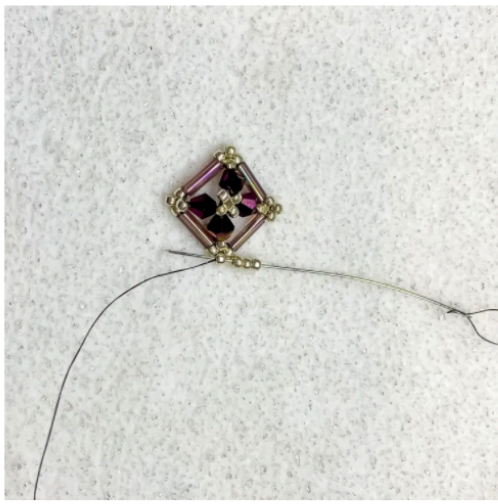
Step 07. Pick up (2) SB, and Sew through the next Bugle. Repeat this step, adding (2) SB in each corner. Exit from the first seed bead you added in this step.



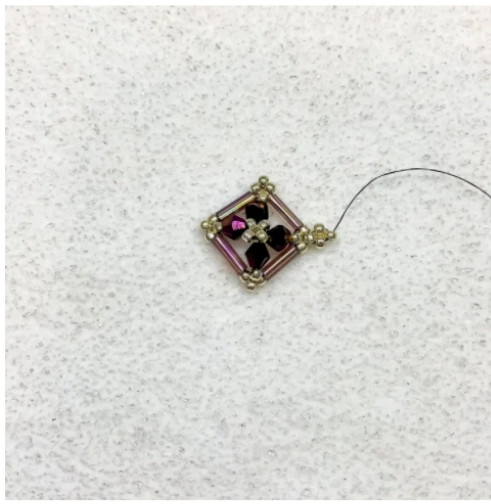
Step 08. Pick up (1) SB, and sew through the second SB in the corner, the Bugle, and the next SB. Repeat this, adding (1) additional SB to each corner.



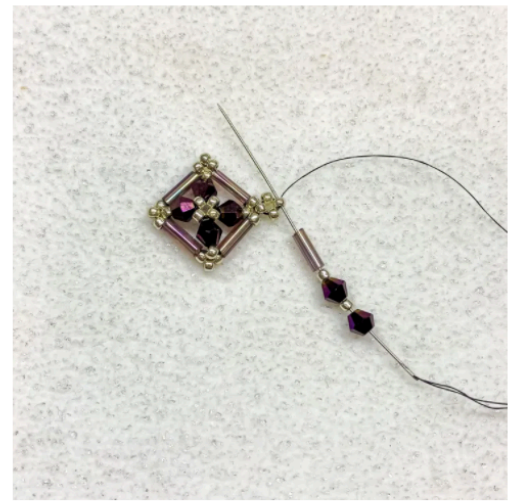
Step 09. Make sure you are exiting from one of the Seed Beads in a corner, in order to proceed to the next step.



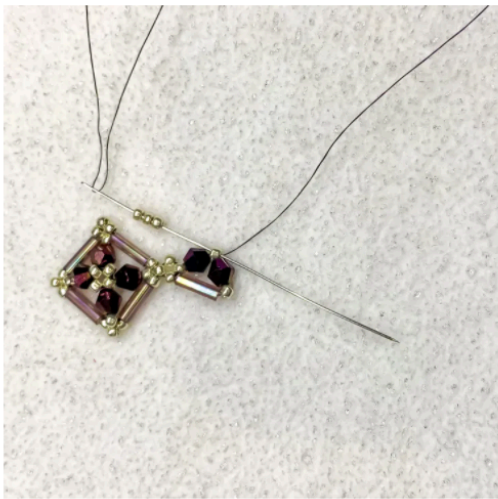
Step 10. Pick up (3) SB, and Sew through the opposite side of the SB that you had exited.



Step 11. One at a time, sew through the next (2) SB, and exit from the SB on the end.



Step 12. Pick up (1) Bicorne, (1) SB, (1) Bicorne, (1) SB, and (1) Bugle. Sew through the opposite side of the SB you had exited from. Sew up through the Bicorne and SB.



Step 13. Pick up (3) SB, and sew through the opposite side of the SB that you had exited.



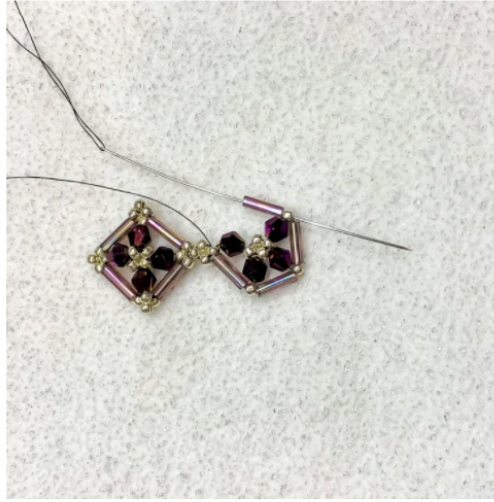
Step 14. One at a time, sew through the next (2) SB, and exit from the SB on the end.



Step 15. Pick up (1) Bicorne, (1) SB, (1) Bugle, (1) SB, (1) Bicorne. Sew through the opposite hole of the SB that you exited from. Then, sew through the next Bicorne, SB, Bugle, and SB.



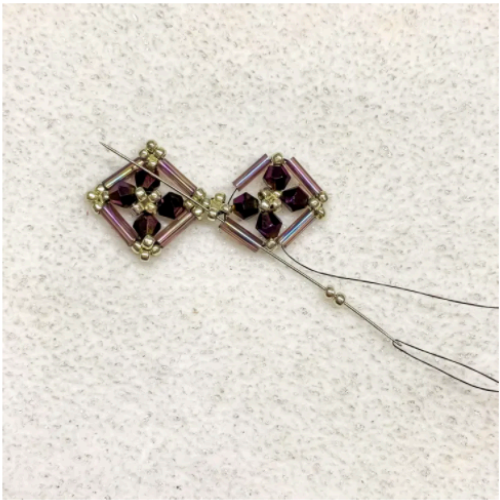
Step 16. Pick up (1) Bugle, and sew through the SB on the opposite side. Then sew through the Bugle, and the next SB.



Step 17. Pick up (1) Bugle, and sew through the SB on the opposite side. Then sew through the next Bugle.

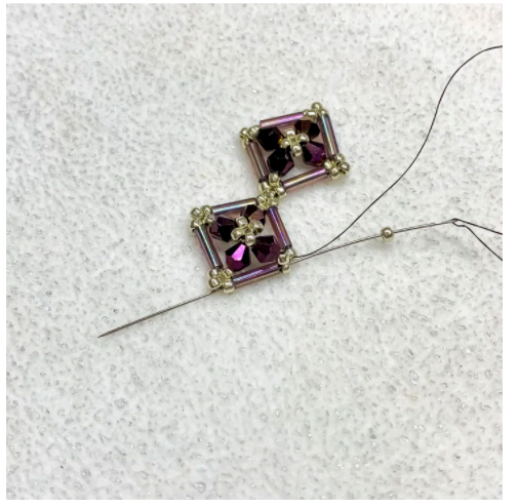


Step 18. Pick up (2) SB, then sew through the next Bugle.

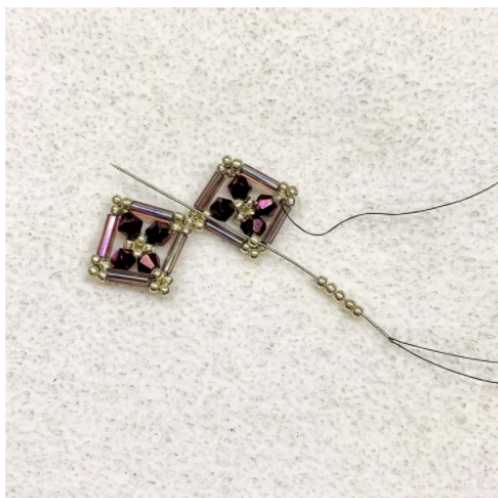


Step 19. Repeat step 18. Then, sew up and down through the next (2) SB.

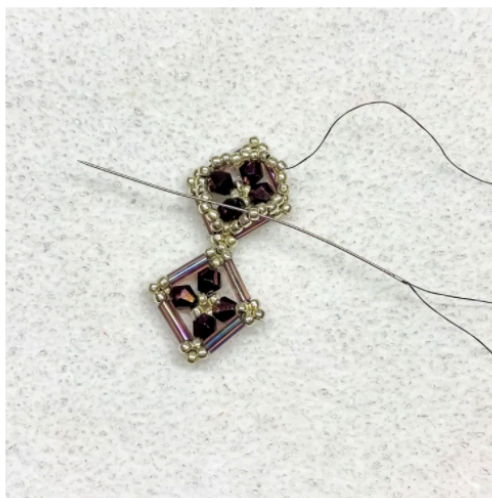
Step 20. Sew through the next Bugle. Add (2) SB to the remaining corner, then sew through the Bugle, and next SB.



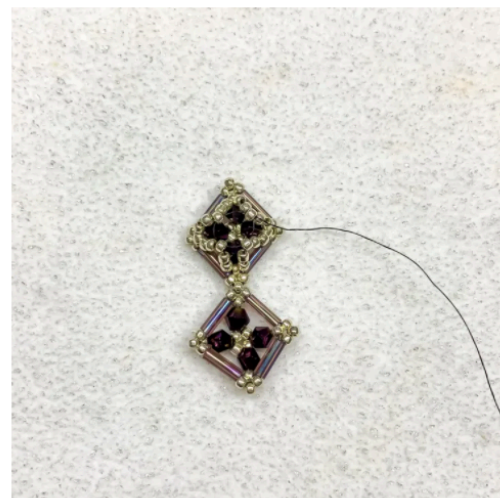
Step 21. Pick up (1) SB, then sew through the next SB, Bugle, SB. With the exception of the point where the two beaded squares join, continue sewing around, adding (1) SB to each corner.



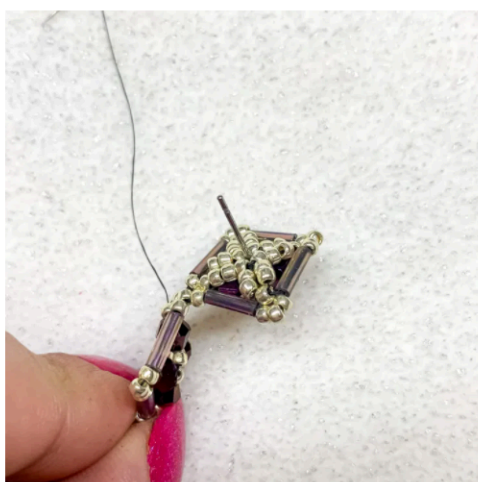
Step 22. Follow thread path, and exit from one of the SB in the corner, which precedes one of the bicones. Pick up (5) SB, and sew through the SB in the next corner. Repeat, adding (5) SB on each side.



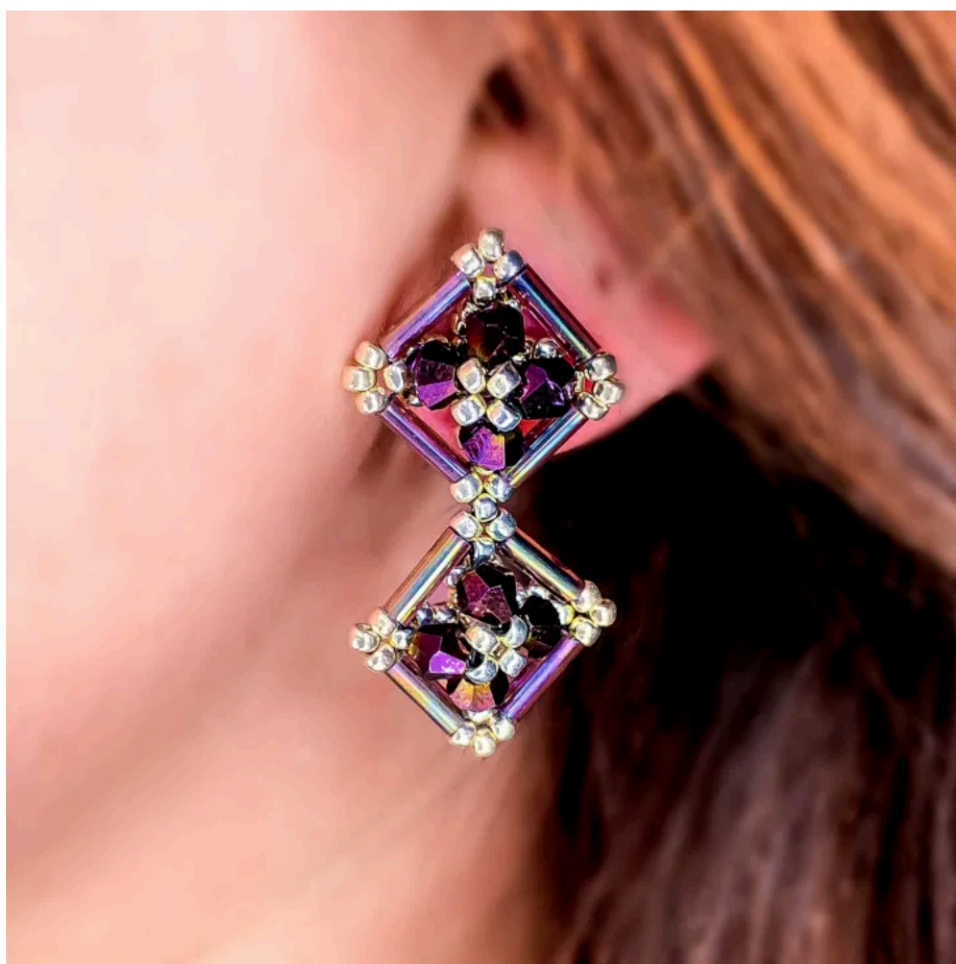
Step 23. Exit from the third SB in the next set of (5). Then, sew through the third SB in the next set of (5). Repeat all the way around until you return through the SB where you started.



Step 24. Sew through those same central (4) seed beads at least two more times, bringing all of the beads together, and pulling tightly after each bead.



Step 25. Repeat steps 22-24 to complete the back of the second square; however, insert the earring post after step 23, and then tighten the central (4) SB around it.



Gina Maddox is the founder of the Orchid and Opal Jewelry & Beads channel on YouTube, and orchidandopal.com. She is a self-taught jewelry artist with over twenty years' experience. Gina enjoys sharing her original designs, and the joy of beads, with so many others.



Watch the [video tutorial](#) version of this pattern by searching this pattern's title on the Orchid and Opal YouTube Channel:
www.youtube.com/c/OrchidandOpalJewelryBeads

Stay Connected

- ♥ WEBSITE SHOP & BLOG: www.orchidandopal.com
- ♥ FACEBOOK: www.facebook.com/orchidopaljewelry
- ♥ INSTAGRAM: www.instagram.com/orchidopaljewelry
- ♥ PINTEREST: www.pinterest.com/orchidopaljewelry/
- ♥ E-MAIL: orchidopaljewelry@gmail.com

Consider becoming a Patron of Orchid and Opal Jewelry & Beads on Patreon.com. Support Gina's work, and receive [monthly benefits!](http://www.patreon.com/join/orchidopaljewelry) www.patreon.com/join/orchidopaljewelry

Copyright 2020. This pattern is not to be copied, reproduced, or sold without the designer's permission. You may sell the jewelry pieces you have created from this pattern. Thank you for respecting the artist's hard work.